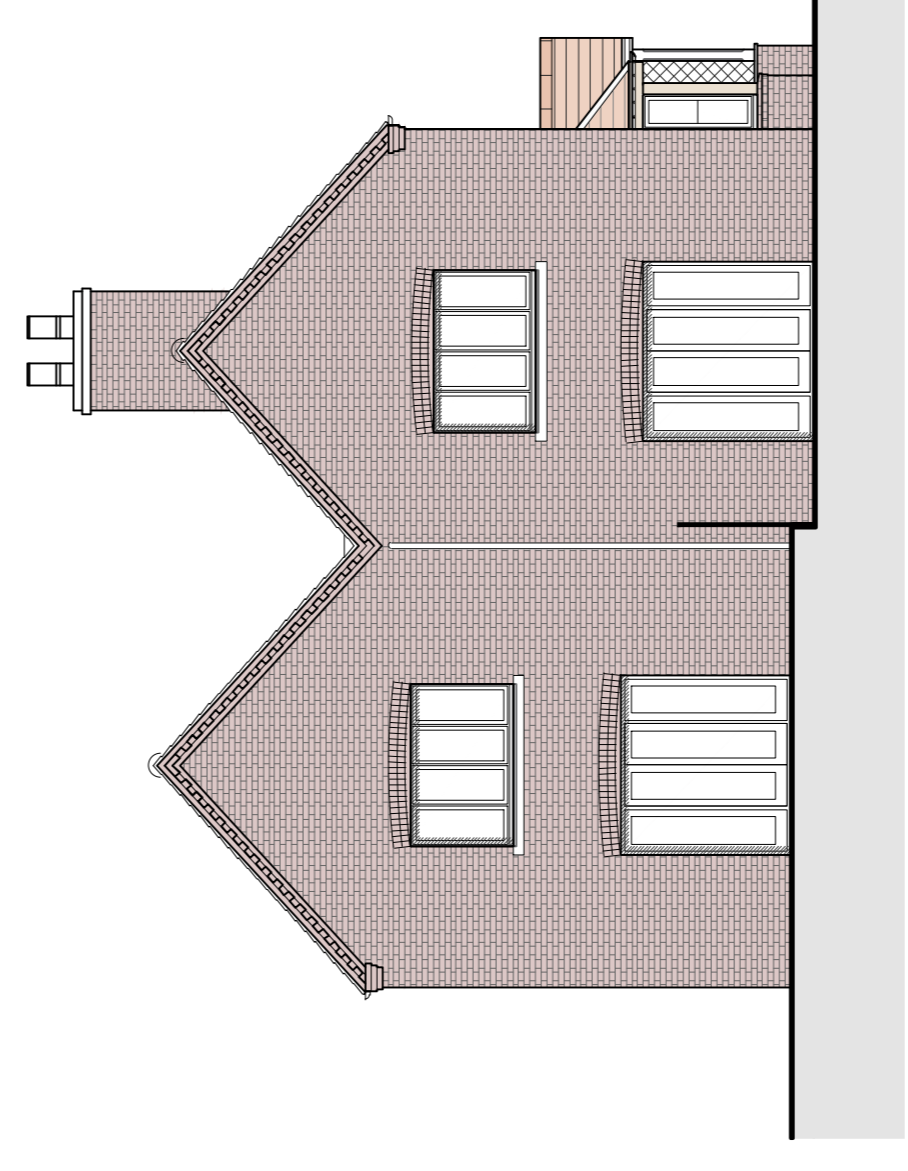
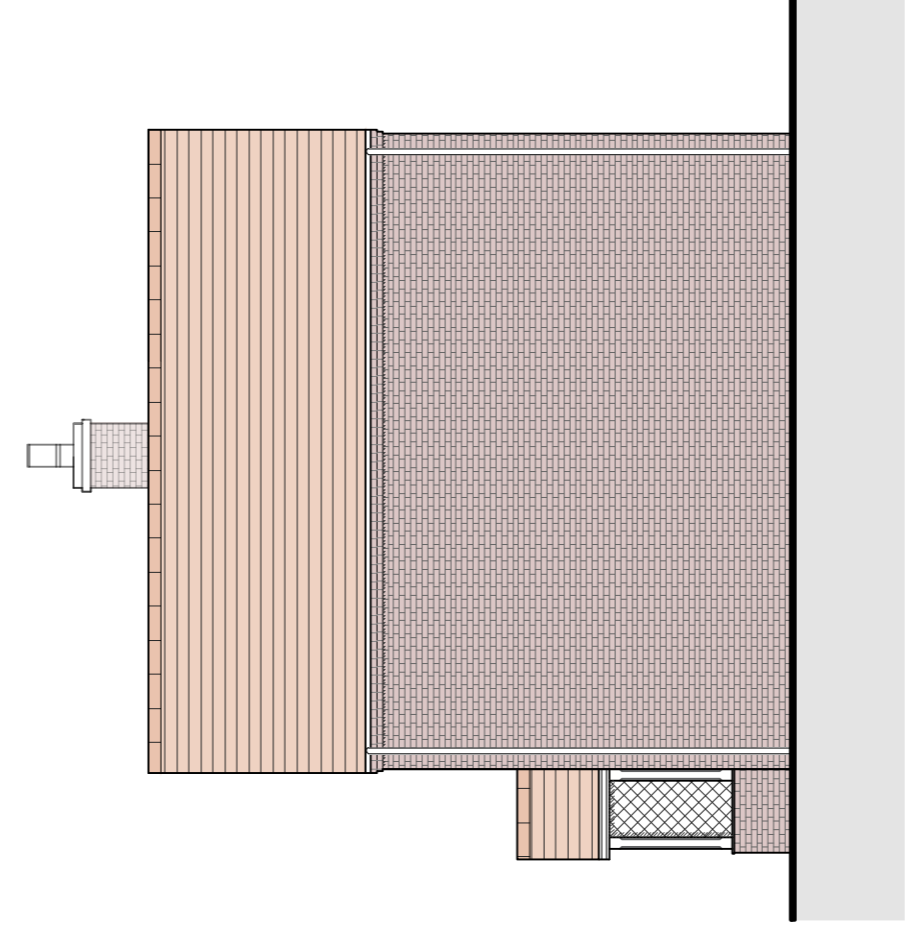
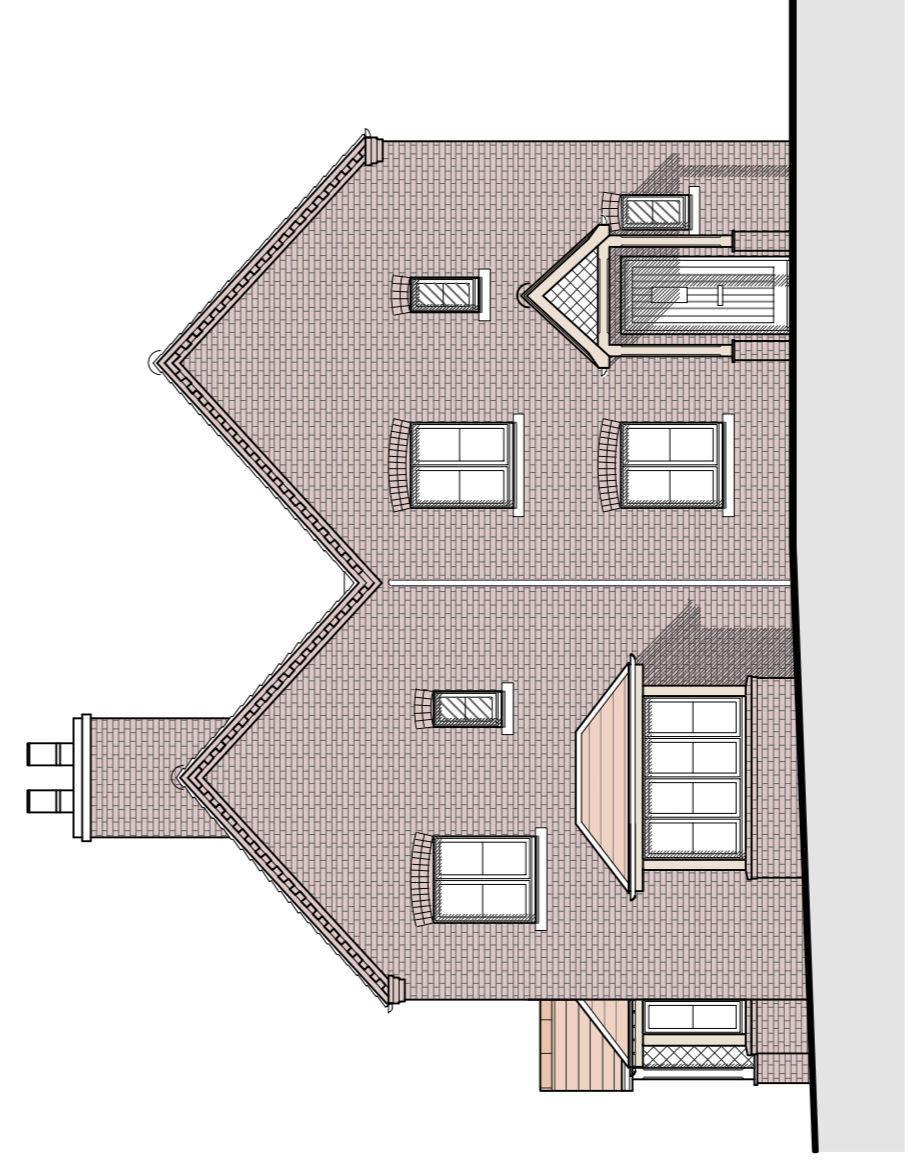
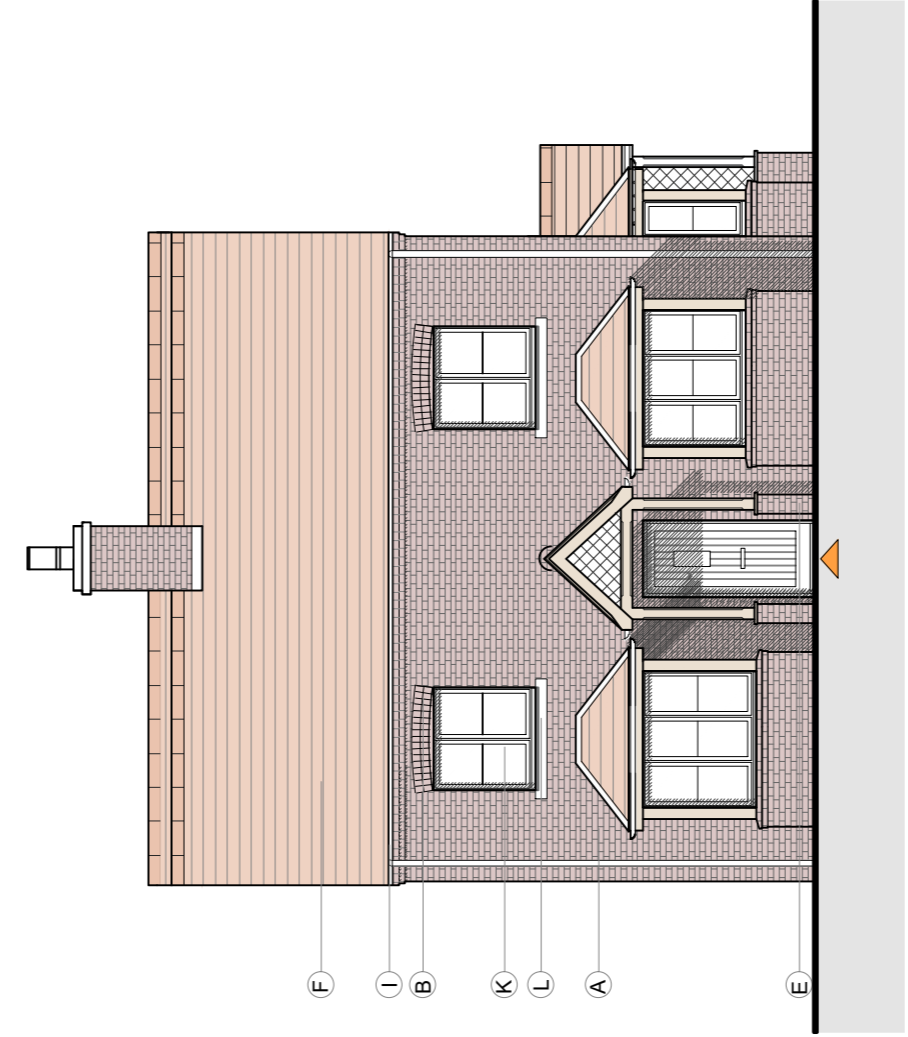
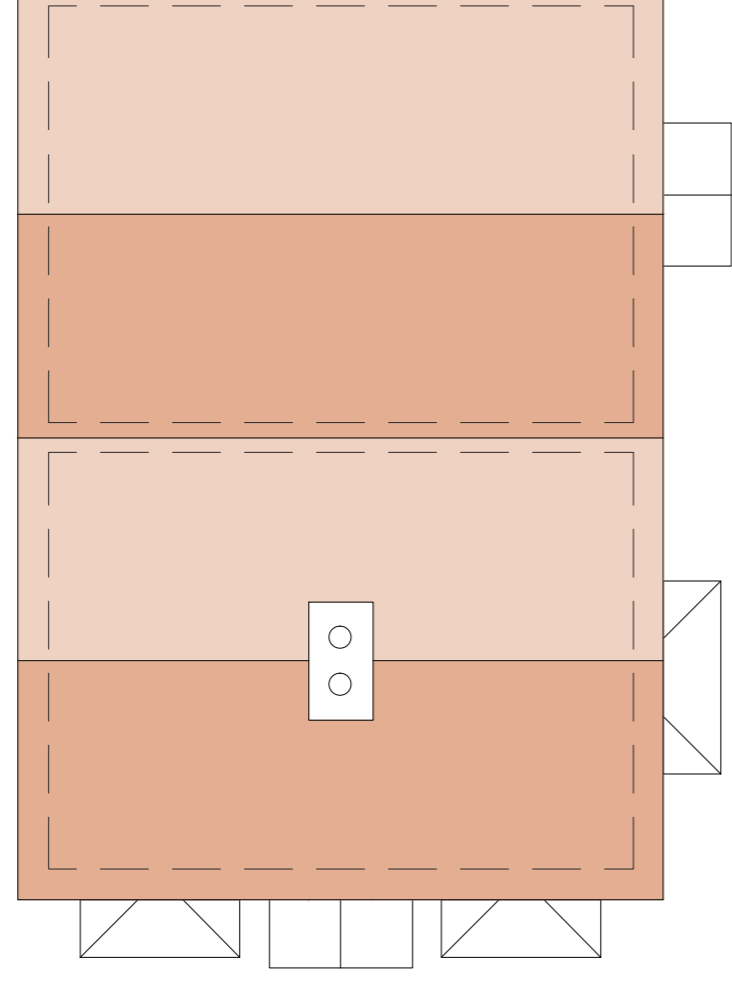
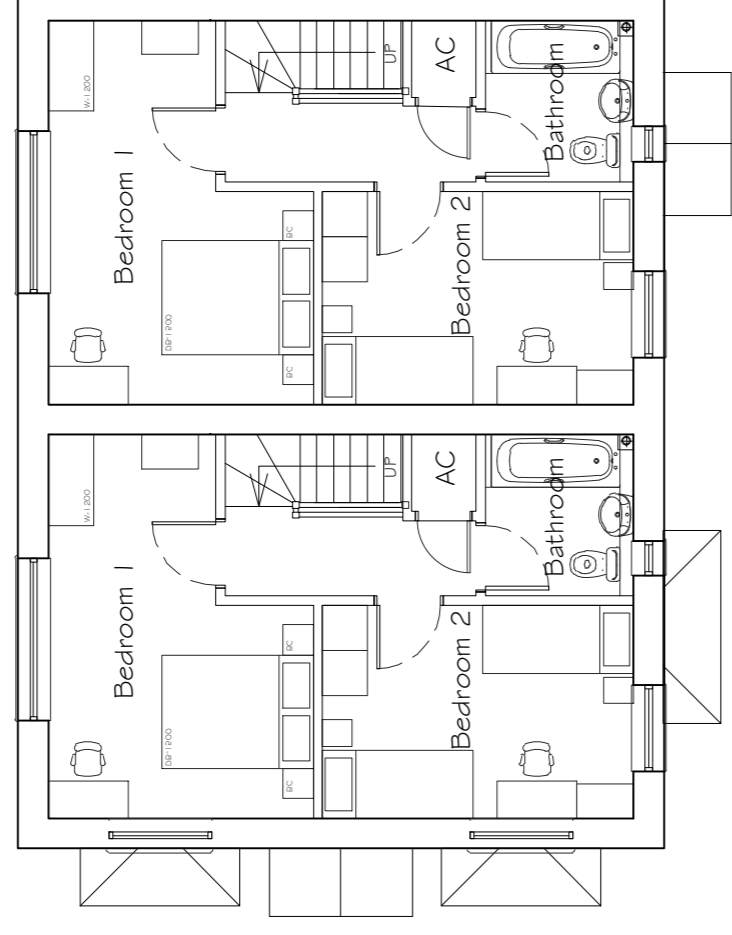
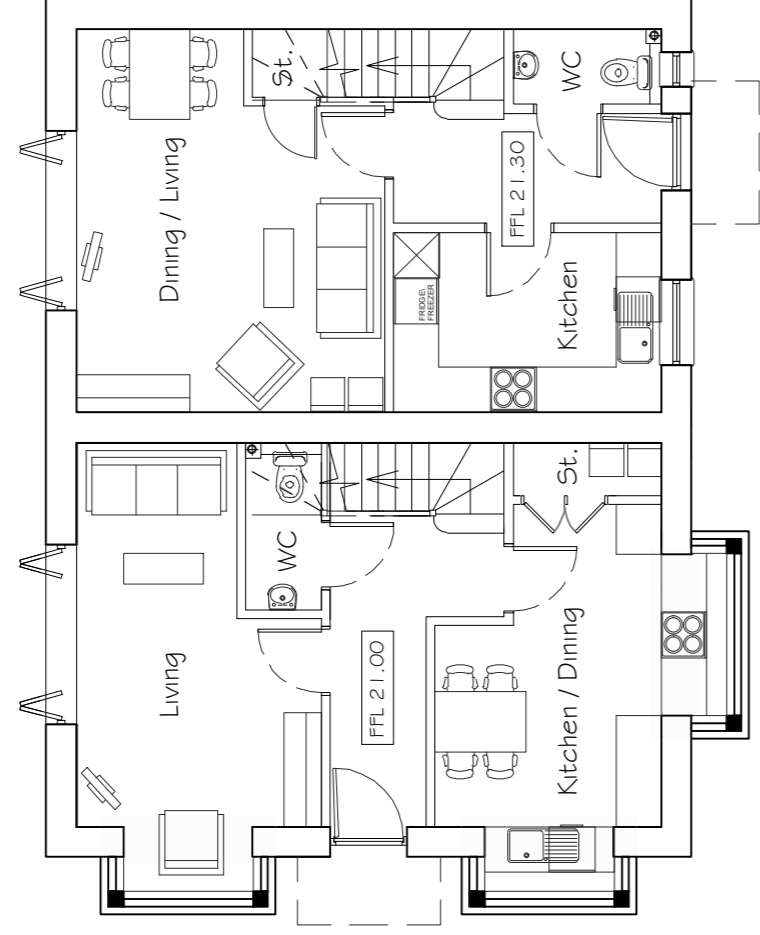


### Plots 24 & 25 (TYPE F) plans & elevations



**Materials Key:**

- A. Red multi stock facing brick in Flemish brick bond
- B. Red multi stock flat arch header/ brick detail
- C. Render
- D. Stone header
- E. Stained / Painted timber entrance door
- F. Natural clay roof tiles/ Clay tile hanging
- G. Natural slate roof
- H. Horizontal timber cladding (timber framed car ports)
- I. Polyester powder coated (PPC) metal rainwater good & soffit
- J. Lead clad dormer with PFC trims
- K. UPVC high performance windows (set back 150mm front face) & rooflights
- L. Buff reconstituted slope window cills
- M. Stone plinth

**Notes**

1. This drawing is the copyright of MH Architects Ltd
2. Do not scale this drawing except for Local Authority planning purposes
3. All dimensions should be checked on site by the contractor prior to commencement of the works.

**Client Approval**

	A. Approved		
X	B. Approved with comments		
X	C. Do not use		
Rev.	Revision	Date	Date